

TANK VENTS

PRISM

PRESSURE VACUUM PIPE AWAY

SAFE EMMISION MODEL

- One piece body construction.
- Connection sizes from 2" - 12" ANSI standard.

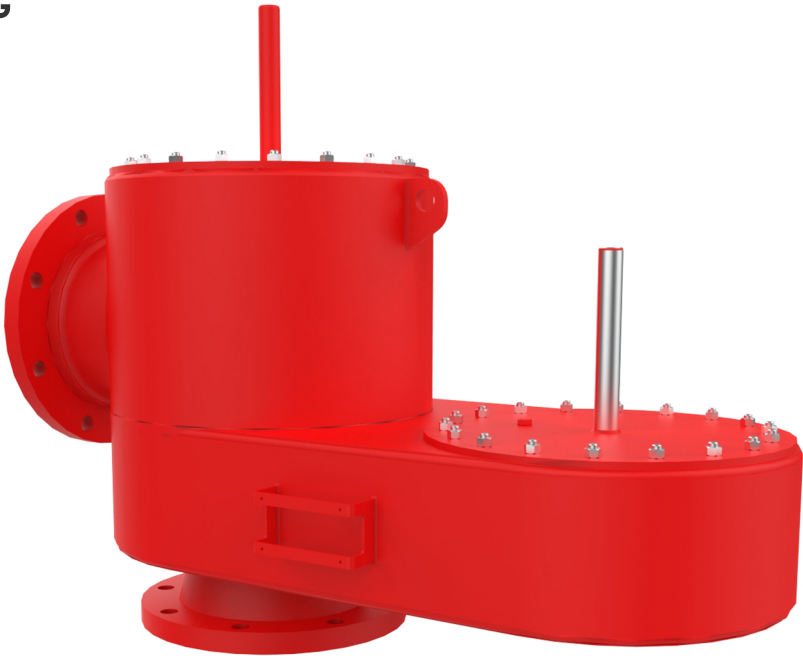
Optional D.I.N., B.S., or J.I.S. or National Pipe Thread connections are special order.
- Pressure settings from 1/2 oz/sq" to 2 PSIG

Performance and Quality

We stand by quality and reliability in our products. That is why our vents are individually hand set at our factory. Each vent will receive a certification sheet showing the exact set point of the pressure valve, as well as the leak rate for the valve.

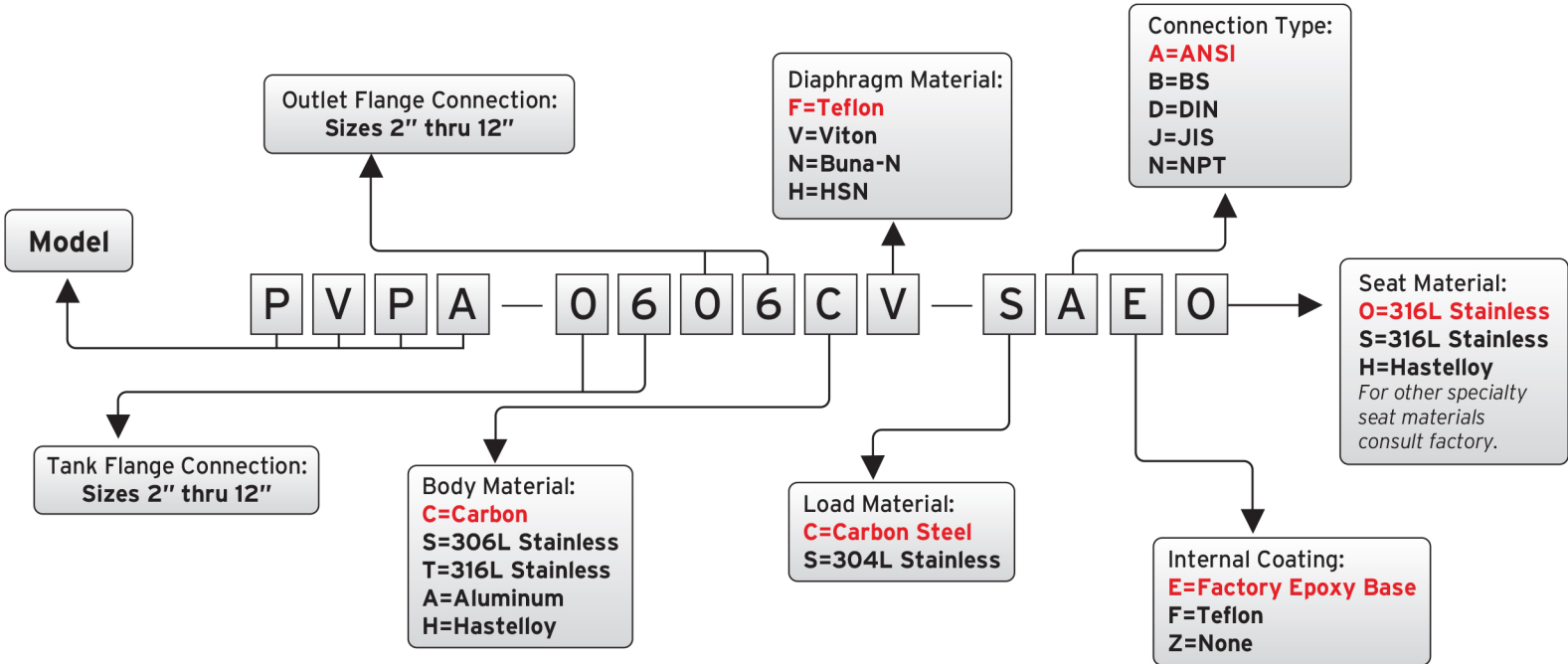
Counter-Force Pallet

The inflating effect of the diaphragm increases as the pressure in the vent rises. This means that when the vent is closer to its set point, the seal is at its greatest performance. Seat leakage for a 1/2 oz/sq" setting is less than 0.5 SCFH for all sizes at 90% of set point.

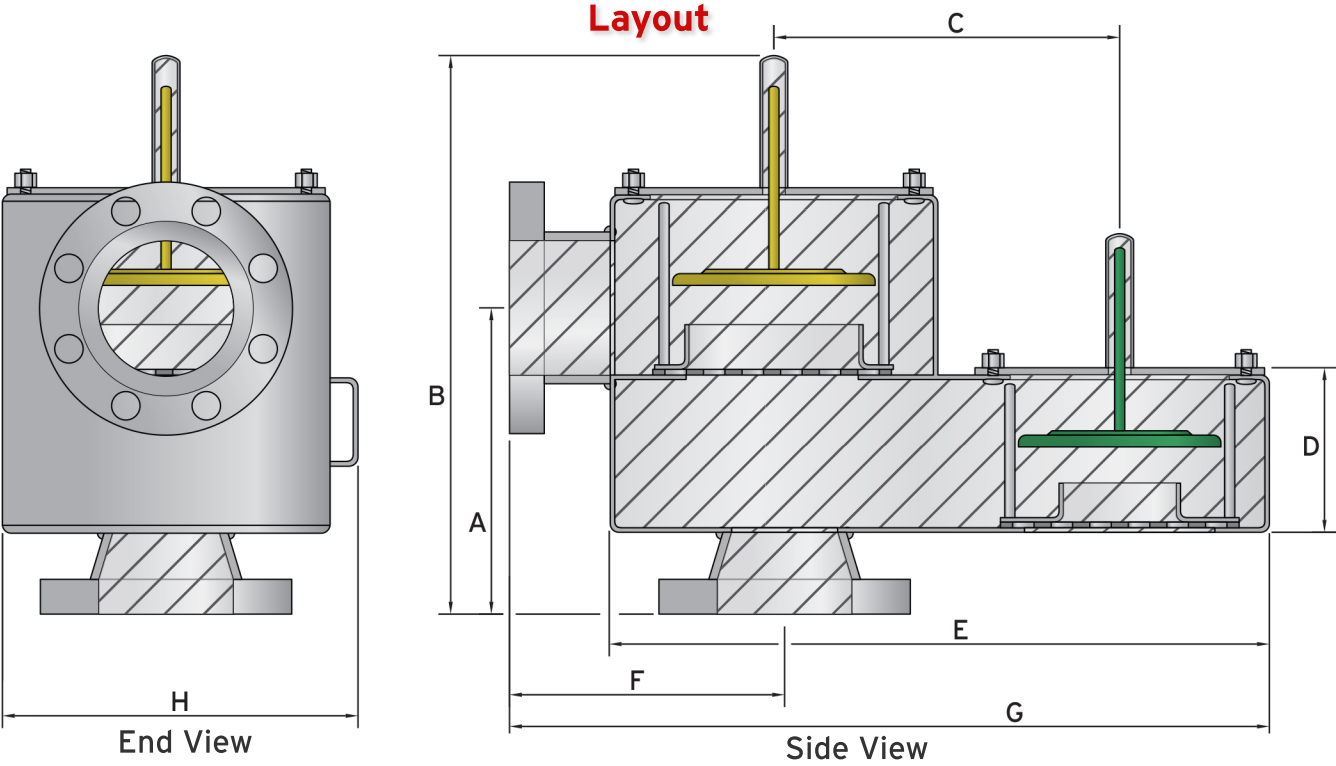


All vents come standard with 316 Stainless Steel internal components, which include; Guide Rod Assembly / Bolts and Nuts / Seats / Pallet.

•Available in: Carbon(SA516-70N), Stainless Steel(304L/310L) Aluminum, Hastelloy(C276)



Example: The above order number indicates a Pressure vent with Pipe-away construction. Tank Flange connection is 6", Outlet is 6", Carbon Steel body, Viton diaphragm, Weight loaded with Steel weight material, and Factory Epoxy Base Internal Coating.



Dimensions

| STANDARD | | | | | | | | | JUMP SIZES | | | | | | | | |
|----------|-----------|----------|---------|--------|---------|--------|---------|-----------|------------|-----------|----------|---------|--------|---------|--------|---------|-----------|
| SIZE | A | B | C | D | E | F | G | H | SIZE | A | B | C | D | E | F | G | H |
| 2" | 8" | 16 3/4" | 12 3/4" | 4 1/2" | 23 1/2" | 8 3/8" | 26 1/2" | 12 3/16" | 2" X 3" | 8 1/2" | 16 3/4" | 12 3/4" | 4 1/2" | 23 1/2" | 8 3/8" | 26 1/2" | 12 3/16" |
| 3" | 8 3/4" | 17" | 12 3/4" | 4 1/2" | 23 1/2" | 8 3/8" | 26 1/2" | 12 3/16" | 3" X 4" | 9 3/16" | 17" | 12 3/4" | 4 1/2" | 23 1/2" | 8 3/8" | 26 1/2" | 12 3/16" |
| 4" | 9 15/16" | 18 1/2" | 12 3/4" | 5" | 23 1/2" | 8 3/8" | 26 1/2" | 12 3/16" | 4" X 6" | 11" | 20 1/2" | 12 3/4" | 5" | 23 1/2" | 8 3/8" | 26 1/2" | 12 3/16" |
| 6" | 12" | 22 5/16" | 16" | 5 1/2" | 30" | 10" | 33" | 15 11/16" | 6" X 8" | 12 15/16" | 22 5/16" | 16" | 5 1/2" | 30" | 11" | 34" | 15 11/16" |
| 8" | 14 7/16" | 27 9/16" | 18" | 6 1/2" | 34" | 12" | 38" | 17 11/16" | 8" X 10" | 15 7/16" | 27 9/16" | 18" | 6 1/2" | 34" | 12" | 38" | 17 11/16" |
| 10" | 16 7/16" | 31 3/8" | 20" | 7 1/2" | 38" | 13" | 42" | 19 11/16" | 10" X 12" | 17 7/16" | 31 3/8" | 20" | 7 1/2" | 38" | 13" | 42" | 19 11/16" |
| 12" | 18 15/16" | 36 3/8" | 22" | 8 1/2" | 42" | 14" | 46" | 21 11/16" | | | | | | | | | |