

# TANK VENTS



## EMERGENCY PRESSURE RELIEF

### SAFE EMISSION MODEL

- One piece body construction.
- Connection sizes from 16" - 24" ANSI standard.  
*Optional A.P.I. connections are special order.*
- Pressure weight settings from 2 - 32.0 oz/in<sup>2</sup>
- Ships with Pressure setting certification

### Performance and Quality

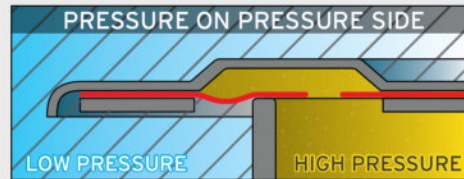
We stand by quality and reliability in our products. That is why our vents are individually hand set at our factory. Each vent will receive a certification sheet showing the exact set point of the pressure valve, as well as the leak rate for the valve.



Seat leakage for **ALL VENTS/ALL SIZES** set points are 0.14SCFH @ 90% of set point.

### Counter-Force Pallet

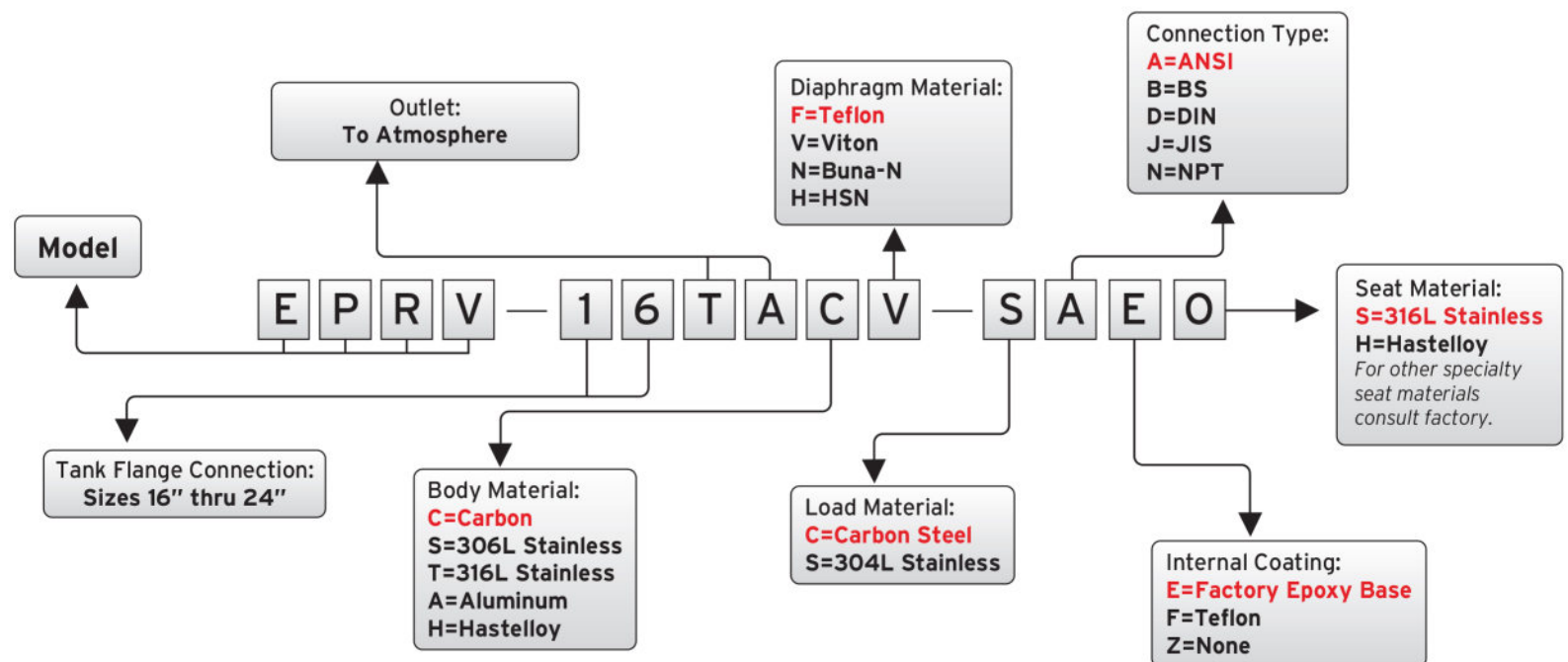
The inflating effect of the diaphragm increases as the pressure in the vent rises. This means that when the vent is closer to its set point, the seal is at its greatest performance.



Self-Reinforcing Pressure Seal



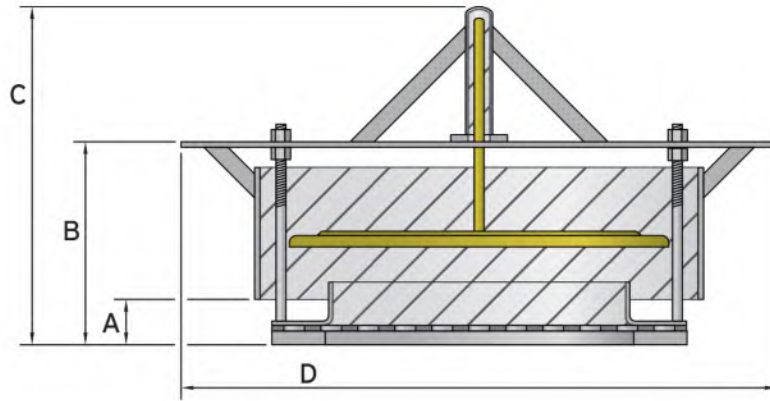
Self-Cracking Vacuum Seal



• Available in: Carbon(SA516-70N), Stainless Steel(304L/310L) Aluminum, Hastelloy(C276)

Example: The above order number indicates an Emergency Pressure Reef vent. Inlet is 16", Carbon Steel body, Teflon diaphragm, Weight loaded with Steel weight material, and Factory Epoxy Base Internal Coating.

## Dimensions and Layout



End View/Side View

## Dimensions and Weight Chart

STANDARD				
VENT SIZE	A	B	C	D
16"	3 1/4"	14"	21 3/4"	31 1/2"
20"	5 5/8"	15 3/8"	23 7/8"	35 1/2"
24"	5 3/4"	17 3/4"	27 1/4"	40"

WITHOUT SET WEIGHTS	
SIZE	DEAD-WEIGHT
16"	105lbs
20"	175lbs
24"	210lbs

## Flow Curve Charts

